

Practical info for contractors during SD

Lillo Site (2023)



Content

- Site overview
- Alarm
- Hazards
- Obligations during your work
- Contact persons



Site overview



Site overview : entrance Ineos => site NG

The Gas Professionals

4



Parking on the site is very limited. Please park on the site with as few cars as possible



- First park at **parking(P1)**
- Then go to **security(S)**
- You will receive a badge
- Drive on to our site and park at **parking(P2)**

Nippon Gases Confidential



Site overview : site NG => exit Ineos

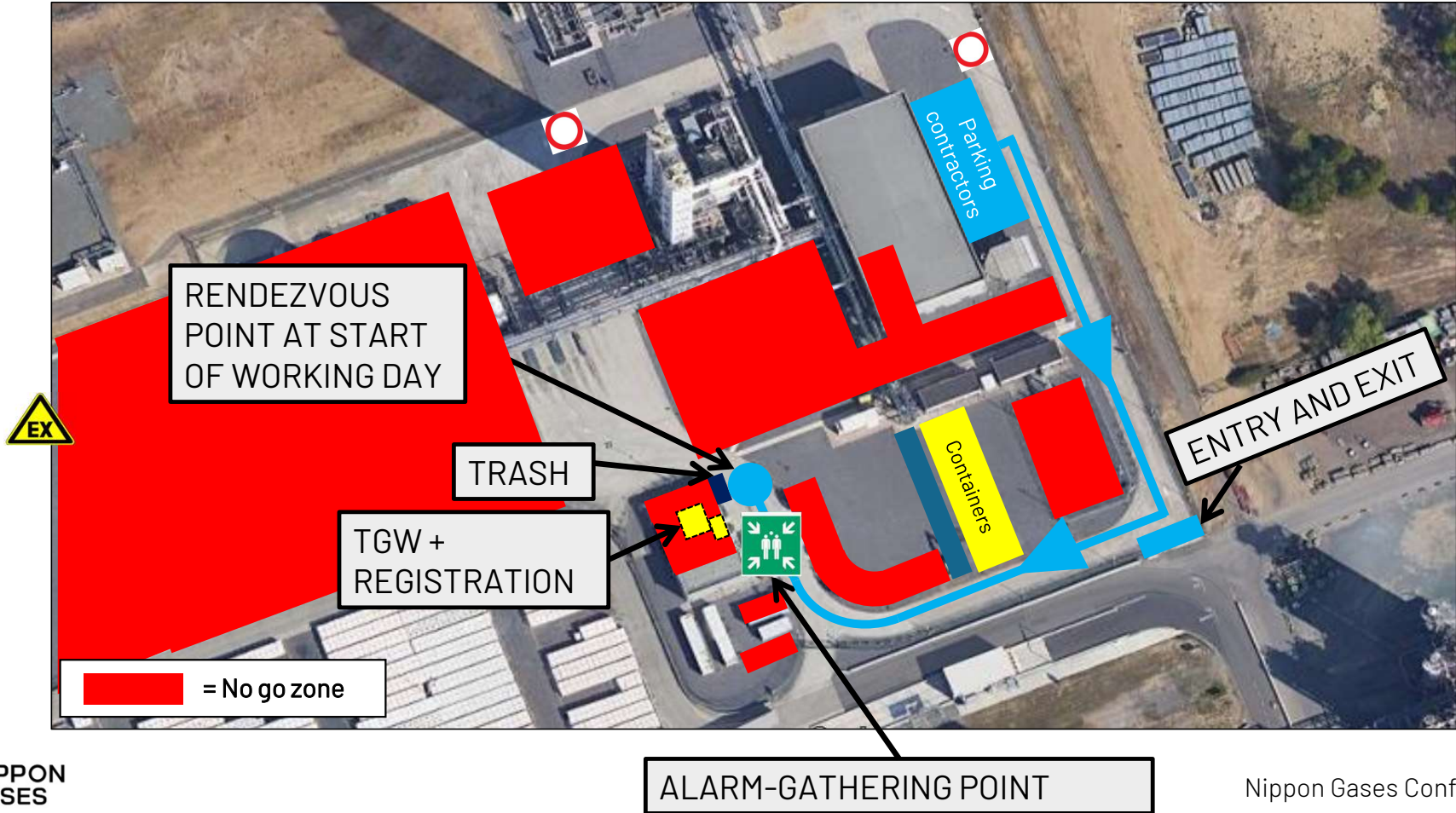
The Gas Professionals

5

- Leaving the site by inserting your badge at **security (S)**
- Badge for multiple days is spit right back out



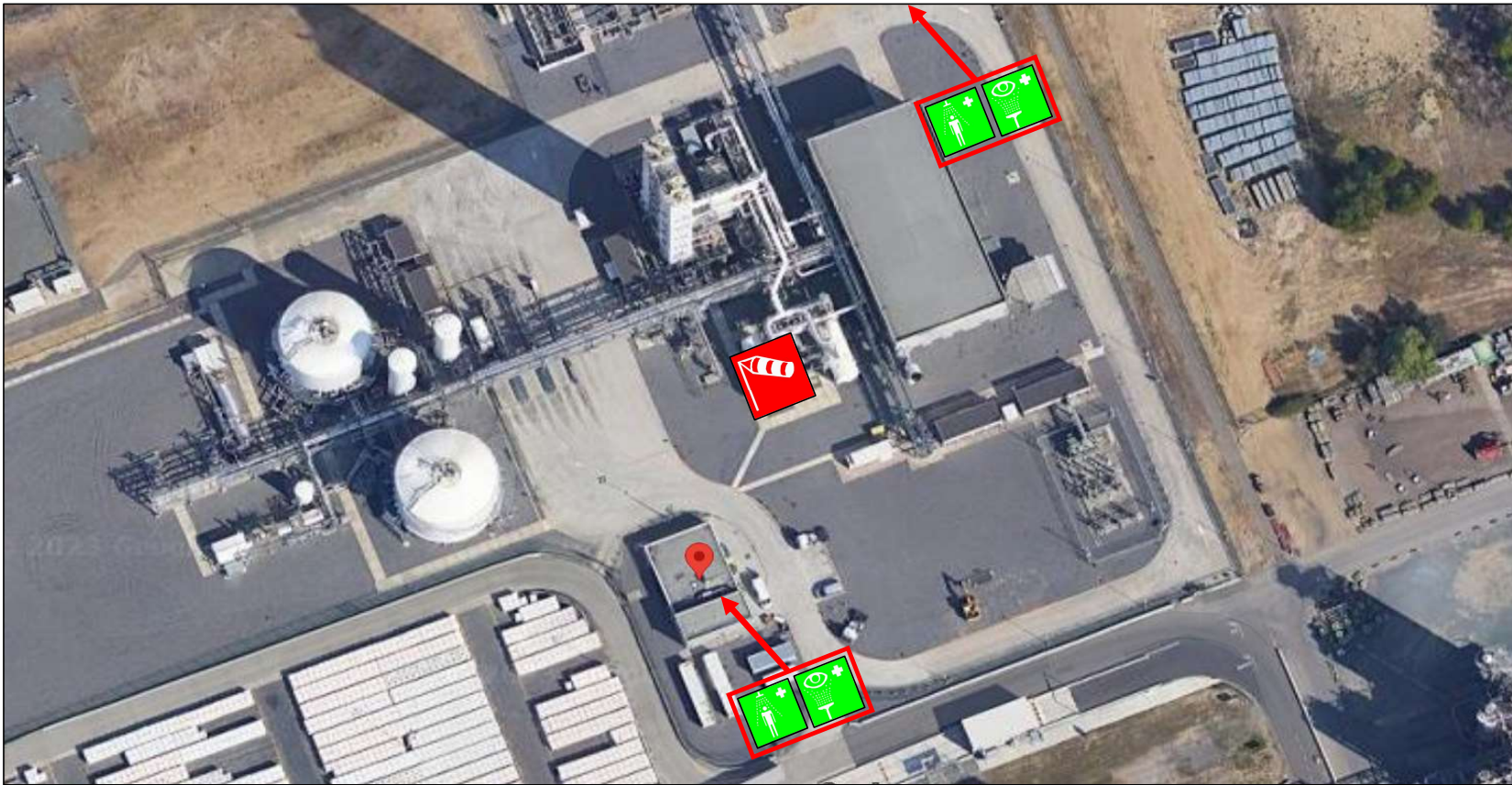
Site overview : rendezvous point



Site overview : safety

The Gas Professionals

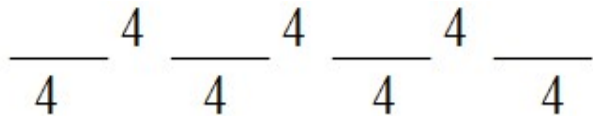
7




Alarm



Warning alarm



- Interrupted signal 4 sec on / 4 sec off:
 - Stop all work immediately.
 - Flashing lights and audible intermittent signal at loading bays.
 - Go to the designated assembly point: 
 - Take your work permit with you on site.
 - Contractors and NG personnel wait here for further instructions from Ineos



Evacuation alarm



- Wave signal:
 - Follow the instructions of the evacuation leader, **NEVER** leave the site on your own initiative.
 - Make your way to the rendezvous point at Ineos, indicated by a pictogram at gate 1.
 - Do not forget your **Ineos badge** to be able to exit.
 - Follow the instructions of the Ineos evacuation leader.



End of alarm

-
- Continuous signal :
 - Return to the NG site where you can resume work after requesting a work permit.
 - If the calamity occurred on the NG site, a return can only be possible if it was released after consultation with the internal / external emergency service (TIP or external fire brigade) and in consultation with crisis management.



Sounding the alarm yourself in emergencies

- Via the alarm indicator on the front wall next to the entrance door (see photo)
- Depending on the emergency alarm, directly to Ineos or CR Zwijndrecht (see photo)
- Via personnel present of NG



Flaring of ethylene and propylene at emergency shutdown INEOS

- Sudden emergency shutdown of Ineos plant leads to complete flaring of ethylene and propylene
- This produces a large intense flame and a lot of black smoke at the flare plant.
- However, no reason to panic, our local operations can continue normally



Hazards



Hazards:

- Additional hazards from other work:
 - Crane work: do not walk under suspended load / object
 - Stay at sufficient distance from cold box (largest tower), risk of falling components
 - Cleaning of aftercooler by Romarco



Obligations during your work



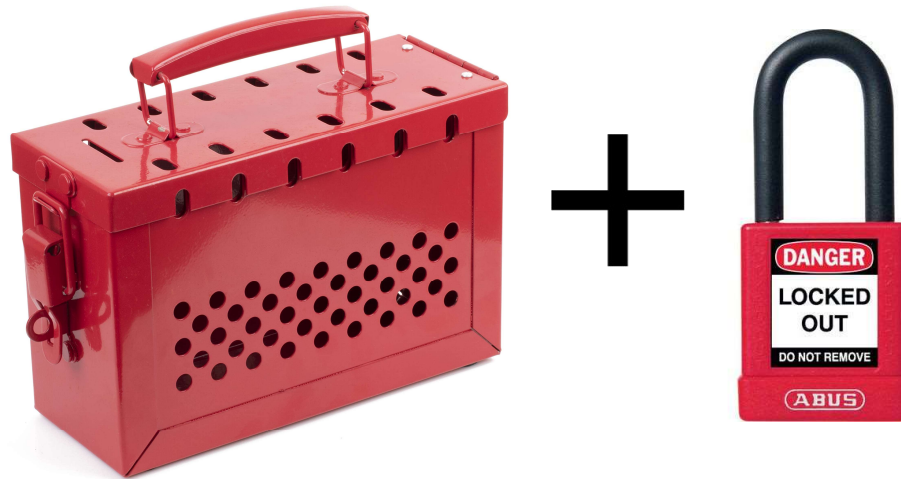
Obligations during your work

- Write down your name and time on the **registration document**: (at location for TGW)
 - Every day when arriving and leaving the plant
 - Used during emergencies as a check that everyone is at the assembly point
- **TGW** (Toelating Gevaarlijk Werk) = work permit:
 - Must always be present at the workplace
 - **Do not start work without TGW**
 - **Return TGW at the end of the working day**



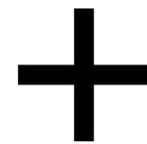
Obligations during your work

- LOTO BOX: (at location for TGW)
 - Crew leader must have a lock with one key and attach it to the LOTO BOX
 - Place and remove this lock at the start and end of work each day



Obligations during your work

- Do not perform work that cannot be started safely:
 - Approach the client
 - Discuss the danger
 - The necessary measures are then taken
- Mark the hazardous work area with cones and yellow/black ribbon:
- Always leave your workplace and shack behind clean
- Only food and drinks in the shack:
 - Not eating in Ineos canteen
 - You can order food before 9h30 (at location for TGW)
- No smoking on the site



Obligations during your work

- When using the workshop after permission by an NG employee, you should always wear safety shoes, safety helmet and safety glasses.



Obligations during your work

- Samenvatting:
 - Registration
 - TGW
 - LOTO + lock
 - Do not perform work that cannot be started safely
 - Mark the hazardous work area with cones and yellow/black ribbon
 - Always leave your workplace and shack behind clean
 - Only food and drinks in the shack
 - No smoking on the site
 - PPE mandatory in building workshop (subject to permission)



Contact persons



Contactpersonen

- **Safety:**
 - Peter Reyniers
 - +32 486 88 48 36
 - peter.reyniers@nippongases.com
- **Maintenance & Reliability Manager:**
 - Marino Waem
 - +32 476 22 96 95
 - marino.waem@nippongases.com





**NIPPON
GASES**
The Gas Professionals



additional information



Hazards: explosion

- At natural gas stations, potentially flammable atmospheres can arise due to the accidental release of natural gas.
- Therefore, an EX zone has been defined.
- Gas detectors or LEL measurements are installed in the EX zone.
- MEASUREMENT
 - Do not enter EX zone with electrical appliances or mobile phones.
 - Indicated on site with pictograms.



Hazards: noise by end of SD

- At several places in the plant, we have to deal with harmful noise levels (>90dB):
 - Prepurifiers
 - Booster / turbine
 - Compressor building
 - ...
- Maatregelen
 - Wear hearing protection in areas marked with corresponding pictogram.
 - Wear hearing protection when you need to perform work with noise-producing tools.
 - For prolonged work (> 30 min) in the compressor building, it is mandatory to wear **double hearing protection** (earplugs + earmuffs mounted on helmet).

